

Install a complete bathroom, anywhere you want, without major construction!



[Customer Testimonials](#) [News About us](#) [Jobs](#) [Contact](#)



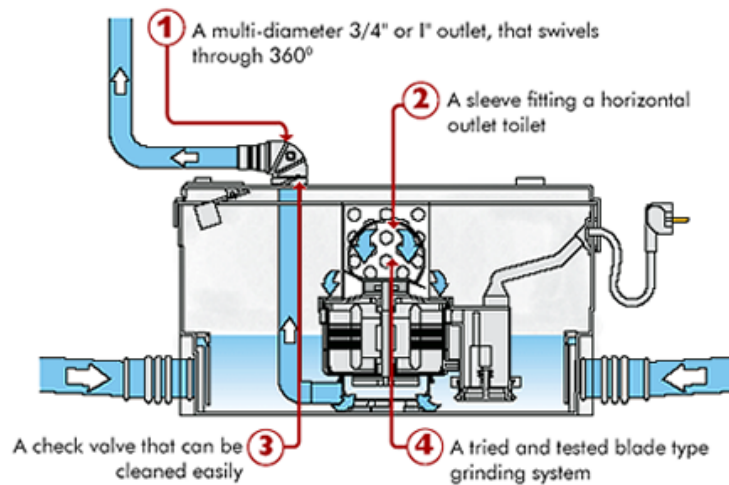
[Home](#) [Choose a product](#) [FAQ](#) [Downloads](#) [Dealers](#) [Preferred Installers](#) [Register online](#)

[Español »](#)

What is a Macerator?

To "macerate" is to soften, to break in pieces. Our Saniflo macerating systems use a rotating cutting blade to liquefy human waste and toilet paper. When mixed with flushing water the waste is pumped into a sanitary sewer as a fine slurry.

Installing a bathroom where you want is often difficult and sometimes even impossible. The main drainpipe is either too far away, or the new bathroom or sink will be lower than the drainpipe, making conventional installation unworkable. So what you need is our Saniflo up flush toilet and macerating pump that requires minimal construction work.



Saniflo's macerator units solve these problems, because they can grind and pump waste over a distance of 150 feet and up to a height of 18 feet. These systems automatically activate when required to reduce effluent to a slurry and pump it away to the soil stack, septic tank or sewer through small diameter discharge pipes. And here is how it works.

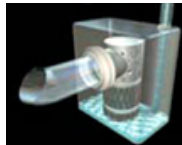
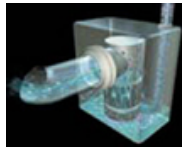
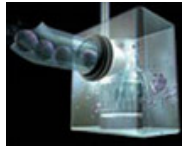
#### Operating Principle of a Saniflo Macerating System

1. The toilet is flushed and the effluent is discharged by gravity through the rear spigot and into the macerator device. The effluent



rises to a preset level, a micro-switch in the pressure chamber of the macerating device is activated.

2. Simple flapper style check valves on each of the side inlets close momentarily, while the blades inside rotate at 3,600 revolutions per minute and reduce any solids within the effluent into liquid, in about 3 or 4 seconds.
3. All waste is pumped into a sanitary gravity drain (a soil stack or a septic tank) through a standard pipe just  $\frac{3}{4}$ " or 1" in diameter. Once the liquid effluent is completely pumped out of the macerator, the micro-switch deactivates.
4. A non-return valve in the macerating unit prevents back-flow of the reduced effluent into the unit. The toilet refills with water. The macerator is now empty (apart from the water seal) and the system is ready for use again.



**NOTE: Toilet flush is given priority if another appliance is simultaneously discharged until the effluent from the toilet is sufficiently reduced, so that pressure switch is deactivated.**

Saniflo systems are environmentally friendly

See our SANIFLO macerating pumps and toilet systems and our Saniflo gray water pumps. They are environmentally friendly; using less water than a normal toilet system. Ecology wise, the macerator could be seen as a primary sewage treatment system and a septic tank and/or municipal sewage treatment system as a secondary treatment system. As the solids enter a sewage system in a liquefied state, they reduce the time and work done by anaerobic bacteria.

SANIFLO products are used to provide additional facilities in bed-and-breakfast houses, restaurants, and factories, as well as in obvious domestic situations:

- en-suite bathrooms
- loft conversions
- basement installations
- garage conversions
- facilities for elderly and disabled

See an example of a suggested installation of an **Upflush Toilet and Macerating Pump**.